

**FACILITYFORCE**  
**ELEVATE**  
**USER CONFERENCE**



# Mobile Apps Showcase

Presented By: Shane Weissinger

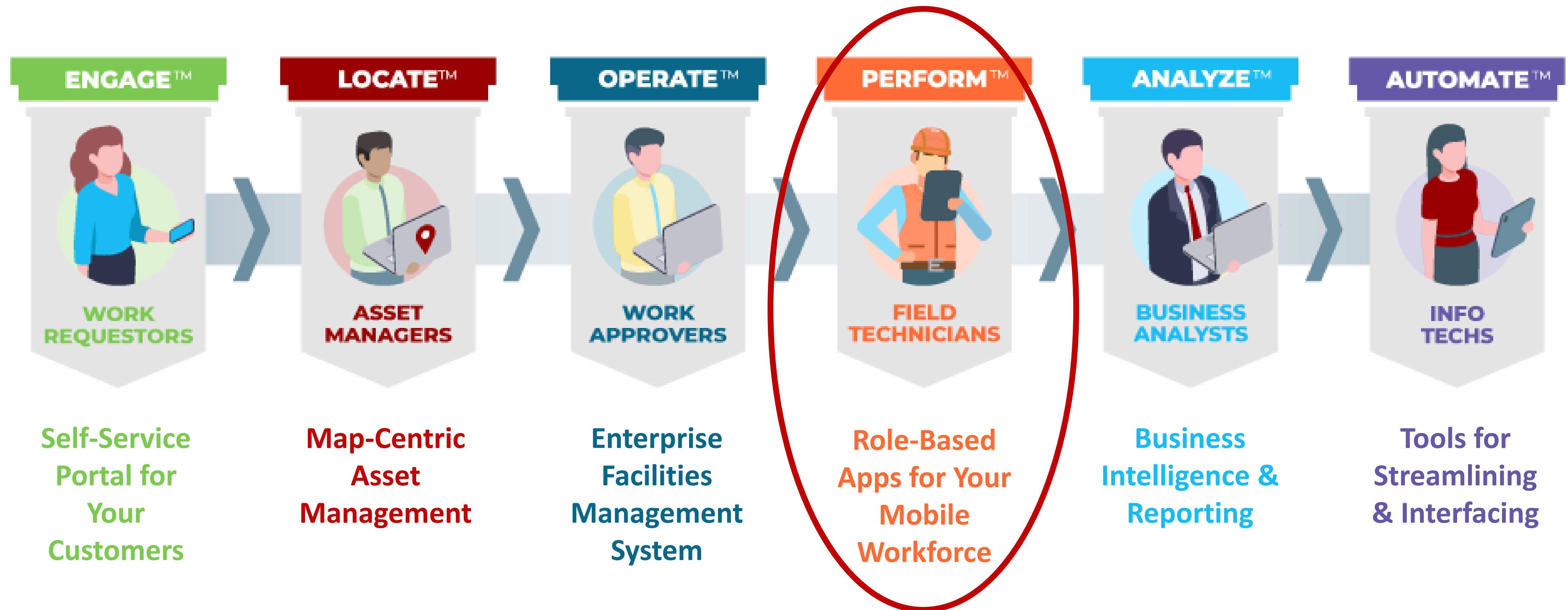


# Agenda:

- I. What is PERFORM (Go)
- II. Where does PERFORM fit into my OPERATE/AiM solution?
- III. Climb on to PERFORM

# FacilityForce: Comprehensive, End-to-End Solution

From Customer Request to the Completion of Work and Beyond...



# What is PERFORM

Role-Based Apps for Your Mobile Workforce



# The PERFORM Family

## Not a mobile application, but a family of applications



Work



Asset Management



Inventory



Material Request



Material Receive



Capital Improvement



# Where does PERFORM fit?

## Solve historical inefficiencies

### Before

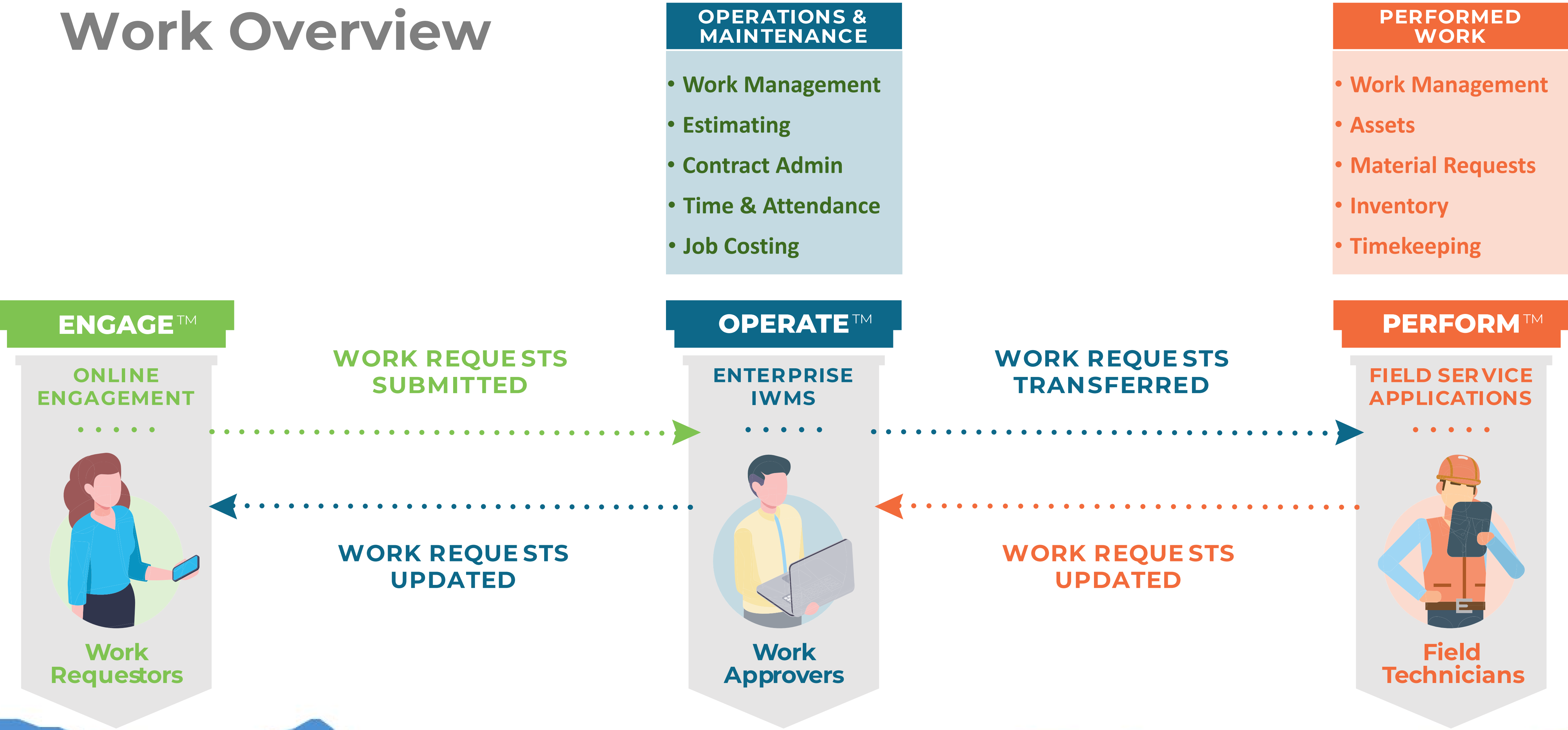
- Work Order assignments are printed and distributed manually
- Work Order statuses, notes are hand-written and sporadically transcribed into OPERATE
- Materials are ordered by paper

### After

- Work Orders are assigned electronically to devices
- Work Order statuses, notes, images are captured on the device and automatically added to the Work Order in OPERATE
- Materials are automatically assigned to the Work Order



# Work Overview





# Where does PERFORM fit for me?

## Spotty Wi-Fi Coverage?

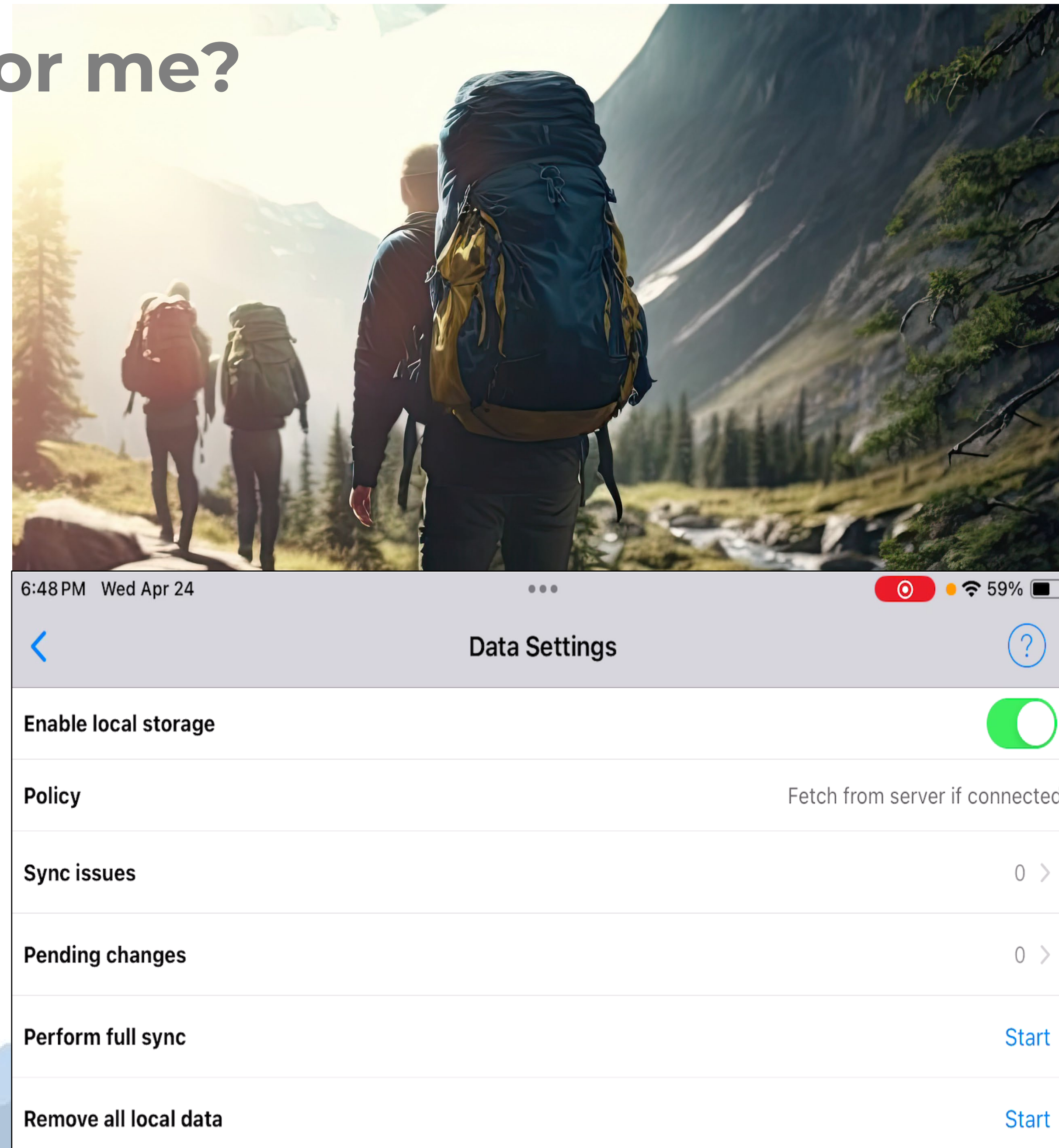
### Online

- Real-time direct connection

### Offline

We all have those assets that are out of Wi-Fi range.

- Local Storage : Data is synced to the device before starting the day and updated upon return





# Survey #1

**Where are you on the PERFORM journey?**

- We have it and love it!
- We have it but need help
- We forgot it was out there, tell me more
- First time hearing this





# Where does PERFORM fit for me?

## Get packed up for the ascent

### Investment

- License
- Devices (iOS only)
- Training per app
- Desire to improve





# Climb on to **PERFORM**

## Let's take a look

- Work
- Asset Management
- Inventory
- Material Request
- Material Receive
- Capital Improvement

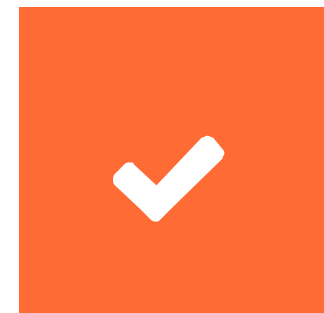




# Work



Assigned Work w/ map view



Time Recording



Shop Stock



Photos



Record Notes



Create New Requests







# Asset Management



Asset Basics



Location Verification



Add New Assets



Capture Condition Data



Inspections



Readings







Live Look



# Inventory



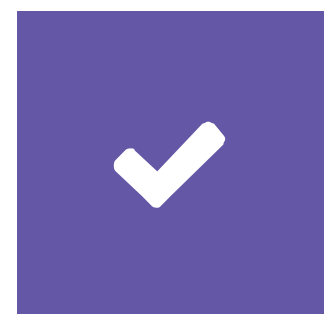
**Draw parts for pick tickets**



**Counter release and return**



**Physical count**



**Parts administration**





# Material Request



Purchase Request



User Purchasing Activity



Spot Purchases



Approvals





# Material Receive



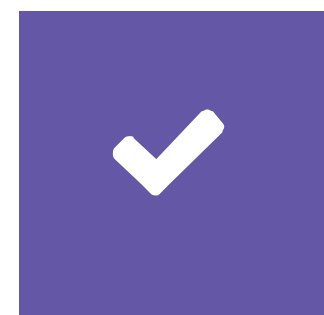
Receive



Disburse



Reverse Disburse



Signature Capture





# Capital Improvement



Project Details



Workflow



Issues



Inspections



Timesheets





# Survey #2

**Seeing PERFORM now, does it fit for you?**

- We have it already, but I'm interested in more
- I need it
- I like it, but we aren't able to move yet
- Not at all





# Mobile Apps Showcase

Presented By: Shane Weissinger

**Thank You for Attending**

